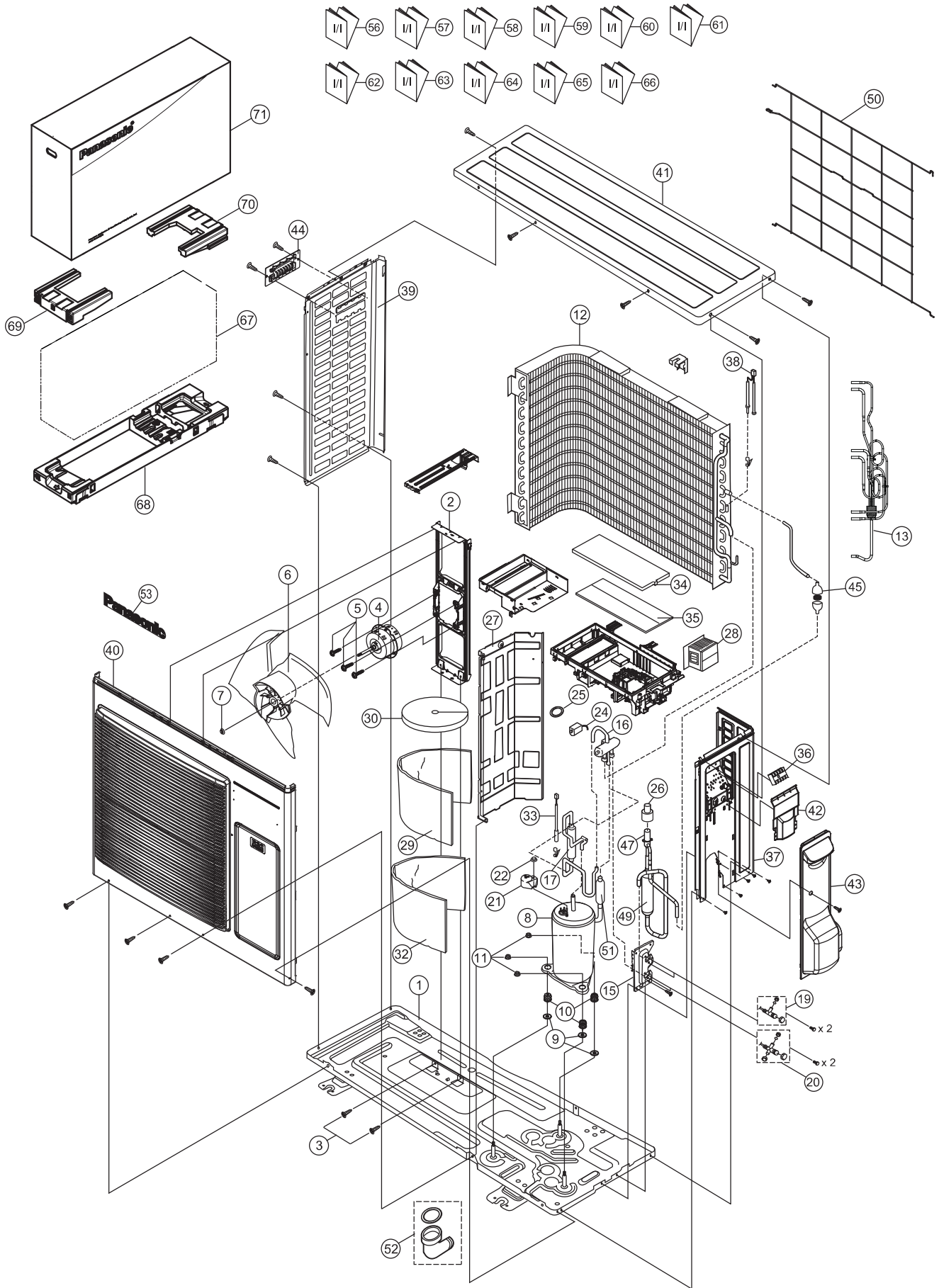


22.2.4 CU-Z71VKE



Note
 The above exploded view is for the purpose of parts disassembly and replacement.
 The non-numbered parts are not kept as standard service parts.

SAFETY	REF. NO.	PART NAME & DESCRIPTION	QTY.	CU-Z71VKE	REMARK
	1	CHASSIS COMPLETE	1	ACXD52K00280	
	2	FAN MOTOR BRACKET	1	ACXD54-00140	
	3	SCREW - FAN MOTOR BRACKET	2	CWH551217	
⚠	4	FAN MOTOR	1	L6CAYYYL0076	O
	5	SCREW - FAN MOTOR MOUNT	4	CWH551106J	
	6	PROPELLER FAN ASSY	1	ACXH03K00070	
	7	NUT - PROPELLER FAN	1	CWH56053J	
⚠	8	COMPRESSOR	1	9KD240XBA21	O
	9	PACKING	1	CWB81043	
	10	ANTI - VIBRATION BUSHING	3	CWH50055	
	11	NUT - COMPRESSOR MOUNT	3	CWH561049	
	12	CONDENSER	1	ACXB32C01930	
	13	TUBE ASS'Y (CAPILLARY TUBE)	1	ACXT00C05240	
	15	HOLDER COUPLING	1	ACXH35-00080	
	16	4-WAYS VALVE	1	ACXB00-00140	O
	17	DISCHARGE MUFFLER (4 W. VALVE)	1	CWB121013	
	19	2-WAYS VALVE (LIQUID)	1	ACXB02-00220	O
	20	3-WAY VALVE (GAS)	1	CWB011363	O
	21	TERMINAL COVER	1	CWH171039A	
	22	NUT - TERMINAL COVER	1	CWH7080300J	
⚠	24	V-COIL COMPLETE - 4 WAY VALVE	1	ACXA43C00250	O
	25	O-RING	1	ACXB81-06510	
⚠	26	V-COIL COMPLETE	1	ACXA43C06110	O
	27	SOUND PROOF BOARD	1	ACXH15-00230	
⚠	28	REACTOR	1	G0C392J00029	O
	29	SOUND PROOF MATERIAL - COMP. BODY	1	CWG302997	
	30	SOUND PROOF MATERIAL - COMP. TOP	1	CWG302246	
	32	SOUND PROOF MATERIAL	1	CWG302636	
⚠	33	SENSOR CO - COMP TEMP	1	CWA50C2185	O
	34	CONTROL BOARD COVER - TOP	1	ACXH13-00490	
⚠	35	ELECTRONIC CONTROLLER - MAIN	1	ACXA73C51350R	O
⚠	36	TERMINAL BOARD ASSY	1	CWA28K1298	O
	37	CABINET SIDE PLATE CO.	1	ACXE04C00700	
⚠	38	SENSOR CO - AIR TEMP AND PIPE TEMP	1	CWA50C3079	O
	39	CABINET SIDE PLATE	1	ACXE04-00580	
	40	CABINET FRONT PLATE CO.	1	ACXE06K00080	
	41	CABINET TOP PLATE	1	ACXE03-00200	
	42	PLATE - C. B. COVER TERMINAL	1	CWH131470	
	43	CONTROL BOARD COVER CO.	1	ACXH13C00170	
	44	HANDLE	1	CWE161010	
	45	STRAINER	1	CWB111032	
⚠	47	EXPANSION VALVE	1	CWB051079	
	49	RECEIVER	1	CWB14030	
	50	WIRE NET	1	ACXD04-00130A	
	51	ACCUMULATOR	1	ACXB13-00010	
	52	BAG - COMPLETE	1	CWG87C900	

SAFETY	REF. NO.	PART NAME & DESCRIPTION	QTY.	CU-Z71VKE	REMARK
	53	PANASONIC BADGE	1	CWE373439	
	56	INSTALLATION INSTRUCTION	1	ACXF60-33670	
	57	INSTALLATION INSTRUCTION	1	ACXF60-33680	
	58	INSTALLATION INSTRUCTION	1	ACXF60-33690	
	59	INSTALLATION INSTRUCTION	1	ACXF60-33700	
	60	INSTALLATION INSTRUCTION	1	ACXF60-33710	
	61	INSTALLATION INSTRUCTION	1	ACXF60-33720	
	62	INSTALLATION INSTRUCTION	1	ACXF60-33730	
	63	INSTALLATION INSTRUCTION	1	ACXF60-33740	
	64	INSTALLATION INSTRUCTION	1	ACXF60-33750	
	65	INSTALLATION INSTRUCTION	1	ACXF60-33760	
	66	INSTALLATION INSTRUCTION	1	ACXF60-33770	
	67	BAG	1	CWG861461	
	68	BASE BOARD - COMPLETE	1	ACXG62C00230	
	69	SHOCK ABSORBER - LEFT	1	CWG713217	
	70	SHOCK ABSORBER - RIGHT	1	CWG713218	
	71	C. C. CASE	1	ACXG50-48880	

(NOTE)

- All parts are supplied from PAPAMY, Malaysia (Vendor Code: 00029488).
- "O" marked parts are recommended to be kept in stock.